

0802-0291 OVAL BAR

09-11 Dodge Ram 1500 Crew Cab

10-11 Dodge Ram 2500/3500 Crew Cab

Components List:

- 2 – Stainless steel 5” oval step bars
- 2 – Front Bracket – Driver & Passenger Side
- 2 – Center Bracket – Driver & Passenger Side
- 2 – Rear Bracket – Driver & Passenger Side
- 6 – Rubber gasket

Parts List:

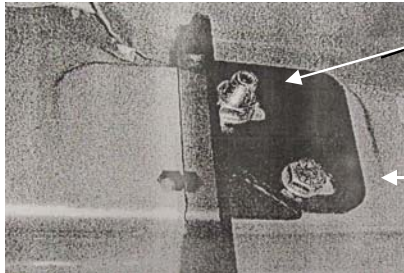
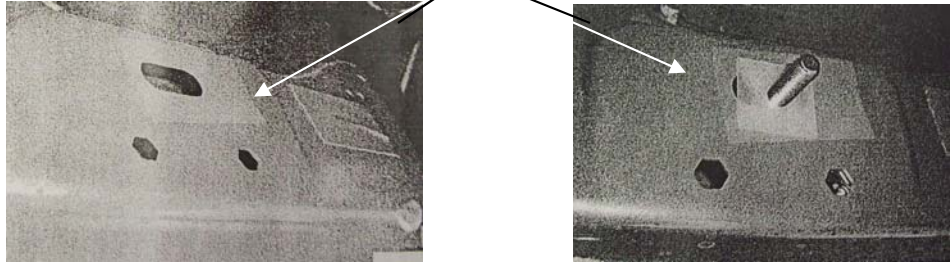
- 6 – M12 Bolt + M10 Nut Plate
- 6 – M12 flat washers
- 6 – M12 lock washers
- 6 – M12 Hex Nut
- 6 – Plastic Retainer
- 6 – M10 x 40 mm hex head bolts
- 12 – M10 x 30 mm hex head bolts
- 18 – M10 flat washers
- 18 – M10 lock washers

Installation Instruction:

1. Remove contents from box and check for damage. Verify all the parts from the list above are present. Please read instructions completely before starting.
2. Start at passenger side near the front body mount remove the tape covering the factory hole in the body panel. Insert one M12 bolt + M10 nut plate into the hole. Partially thread plastic retainer to bolt + nut plate.
3. Take the passenger side front bracket (Front & Center bracket step bar flange face to the rear of truck and rear bracket step bar flange face to front of truck) and line it up to the bolt+ nut plate and fasten with M12 flat, lock washers, M12 nut and M10 flat, lock washer, M10 hex bolt.
4. Move to the center of the cab and locate the factory hole in the body panel and install center bracket using step 2 & 3.

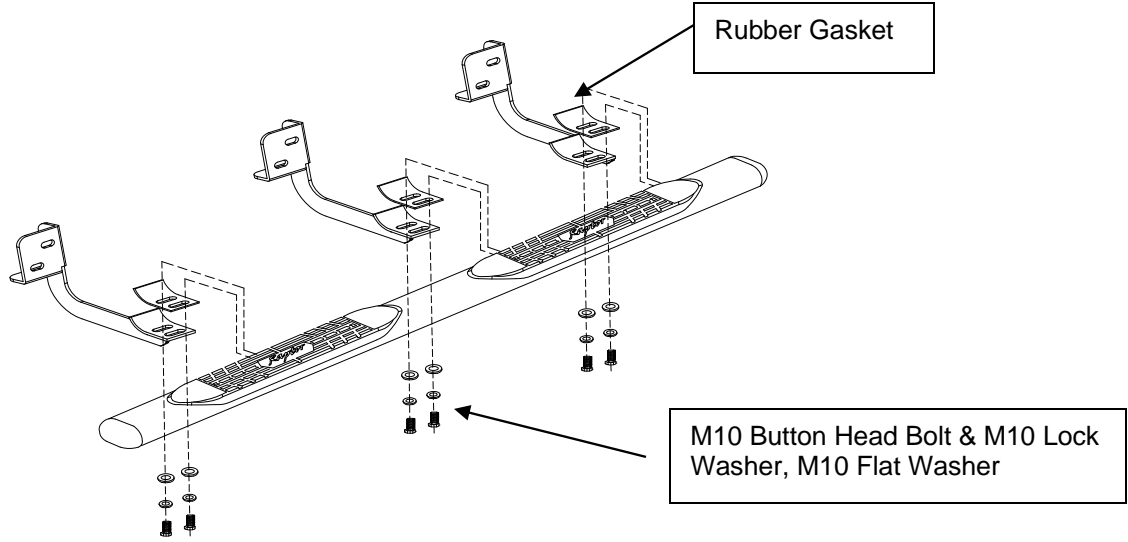
5. Move to the rear of the cab by the rear body mount bolt and locate the factory hole in the body panel and install rear bracket using step 2 & 3.
6. Place passenger side step bar on brackets. Each step bar is marked driver and passenger. Assemble with M10 button head bolts and M10 lock washers. Repeat installation for driver side.

Bolt + Nut plate line up hole



M12 Hex Nut & M12 Lock Washer. M12 Flat Washer

M10 hex bolts & M10 Lock Washer, M10 Flat Washer



Rubber Gasket

M10 Button Head Bolt & M10 Lock Washer, M10 Flat Washer

Installation View of Bracket & Bar