

SKU# 170107-445600

QUICK DISCONNECTS

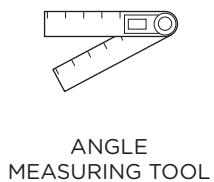
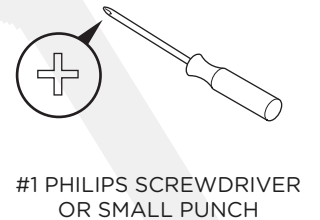
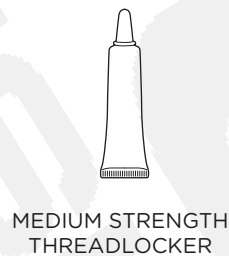
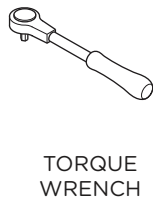
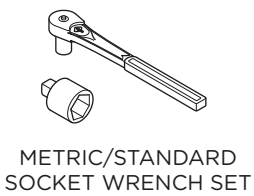


Components:

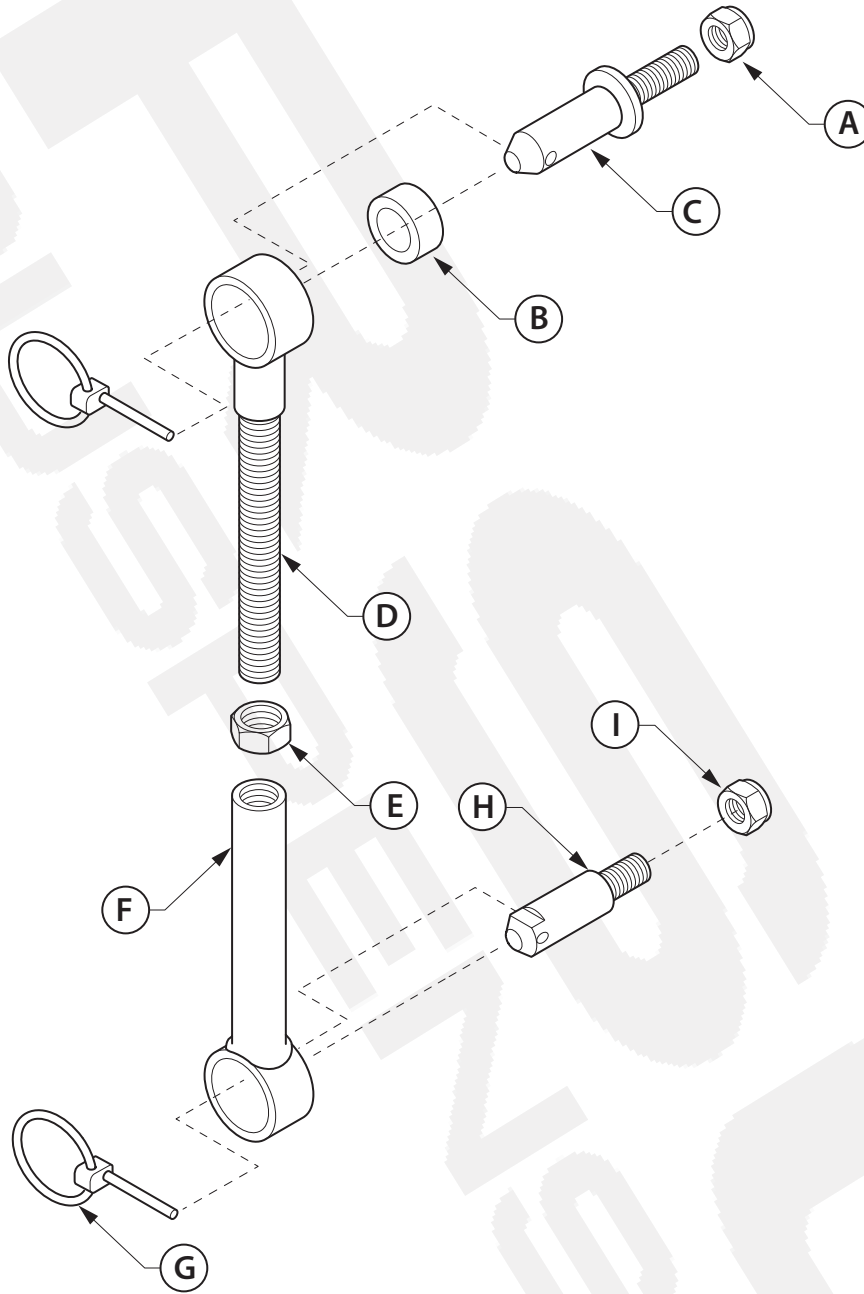


Quick Disconnect
Qty 2

Tools Required:



Components Exploded



- A 1/2" Nylon Nut
- B Offset Polyurethane Spacer
- C 1/2" Upper Tapered Mounting Post (Long)
- D Upper Male Threaded End Assembly
- E 5/8" Jam Nut

- F Lower Female Threaded End Assembly
- G Click Pin
- H 1/2" Lower Tapered Mounting Post
- I 1/2" Nylock Nut

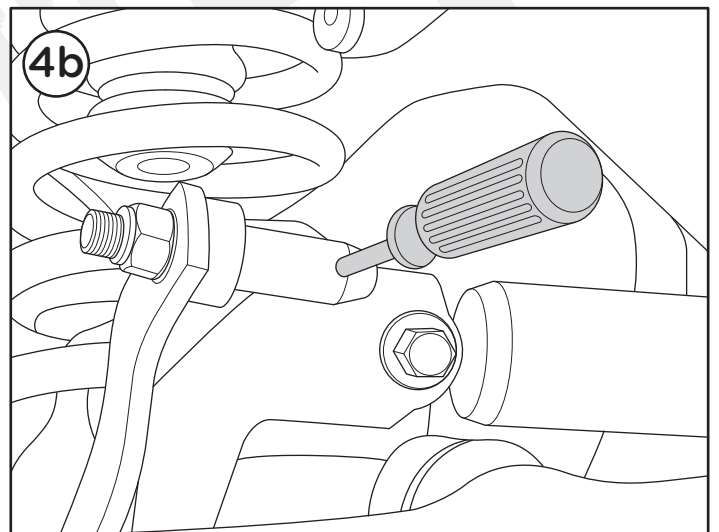
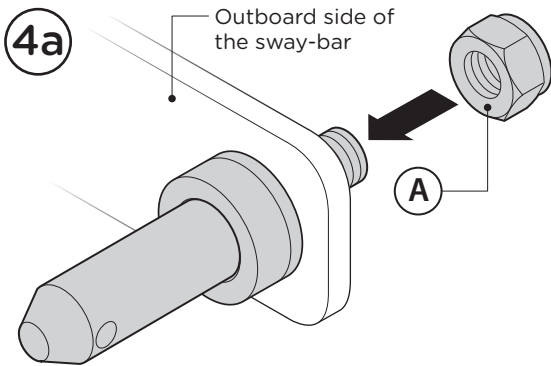
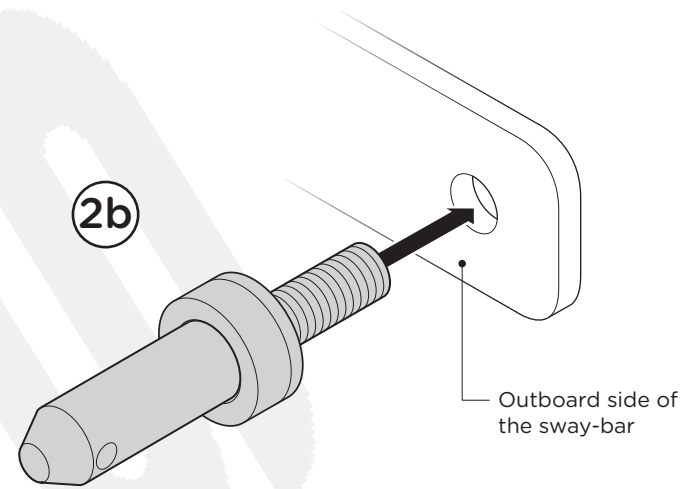
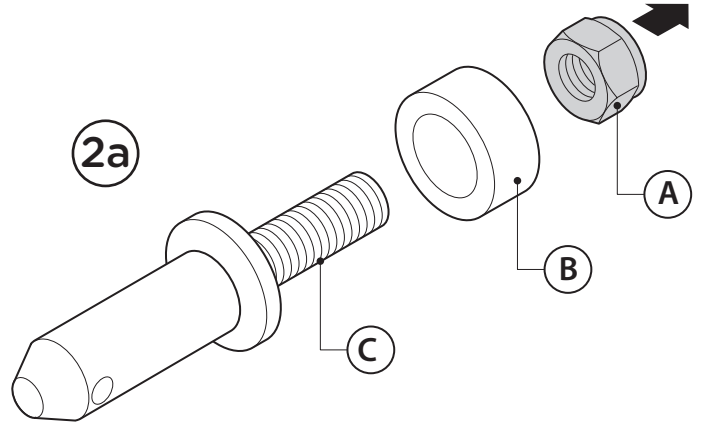
Install Upper Mounting Posts

1. Remove front swaybar drop links and mounting hardware per the factory service manual instructions for your vehicle.
2. Locate the long stainless steel 1/2" Upper Tapered Mounting Posts (C) with attached Offset Polyurethane Spacers (B).

Remove the nut (2a) and mount the Upper Tapered Mounting Posts (C) on outboard side of the sway-bar, ensuring small Click Pin holes are horizontal or parallel with the ground (2b).

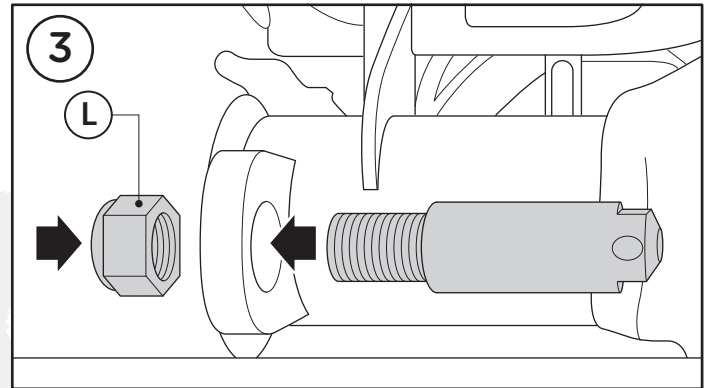
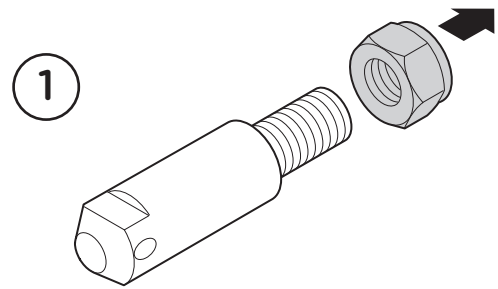
3. Apply medium strength threadlocker to the tip of mounting post threads.
4. Secure mounting posts to swaybar by installing 1/2" Nylock Nuts (A) from the inboard side and tighten to 65 ft-lb. using a torque wrench.

HINT: A small Philips head screwdriver or punch inserted into the Click Pin hole will enable you to pre-vent the mounting post from rotating when tightening the nut.



Install Lower Mounting Posts

1. Remove the nut and insert stainless steel 1/2" Lower Tapered Mounting Posts into lower sway bar link holes on front axle. Position posts with tapered ends pointing inboard, ensuring small Click Pin holes are horizontal or parallel with the ground.
2. Apply medium strength threadlocker to the tip of mounting post threads.
3. Install 1/2" Nylock Nuts (L) on outboard side of lower swaybar link brackets and tighten to 65 ft-lb. using a torque wrench.



Set Quick Disconnect Lengths

1. Determine the Ideal Sway bar Angle for your vehicle according to the following chart

Note: In some cases a rotary grinder may be necessary to slightly open up the sway bar hole to clear the 1/2" bolt. This ensures a tight fit.

CAUTION

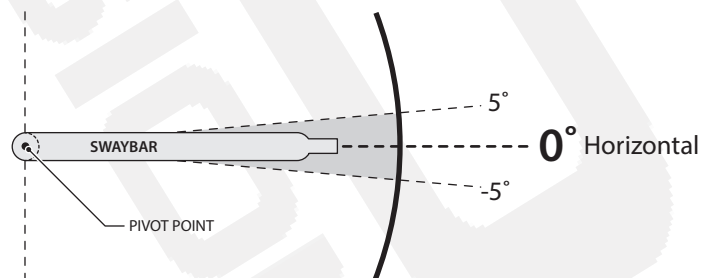
Max. length is based on required thread & jam nut engagement. Measure & DO NOT extend Quick Disconnects beyond maximum length of your part number (bushings center to center).

Vehicle	Part Number	Maximum Length	Ideal Swaybar Angle (Acceptable Range)
JK Wrangler	PN 0000	7-7/8"	0° (-5° to 5°)
	PN 0000	11-5/8"	

2. Adjust the length of your Quick Disconnects until swaybar is at the Ideal Angle or within Acceptable Range. Vehicle must be at normal ride height and located on level ground.

Once adjusted, lay Quick Disconnects on a flat surface and tighten 5/8" Jam Nuts (H) firmly against the Lower Ends (I).

Side View



Install Quick Disconnects

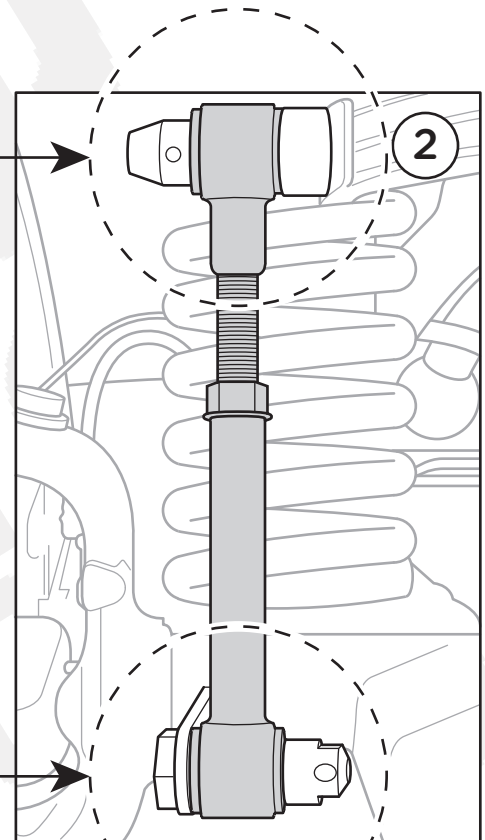
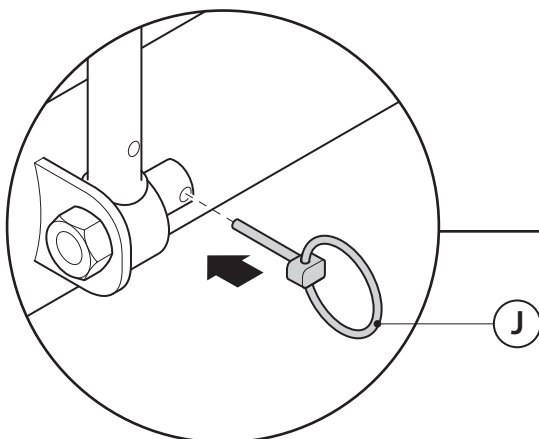
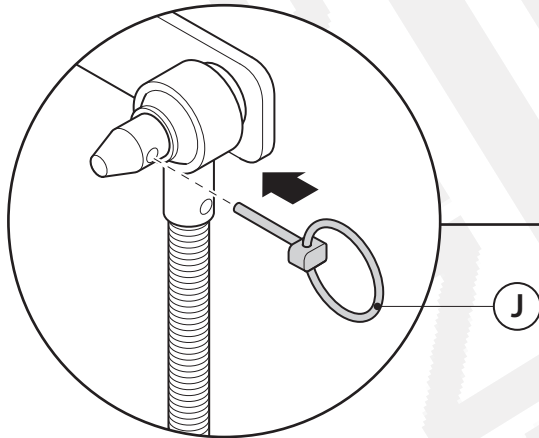
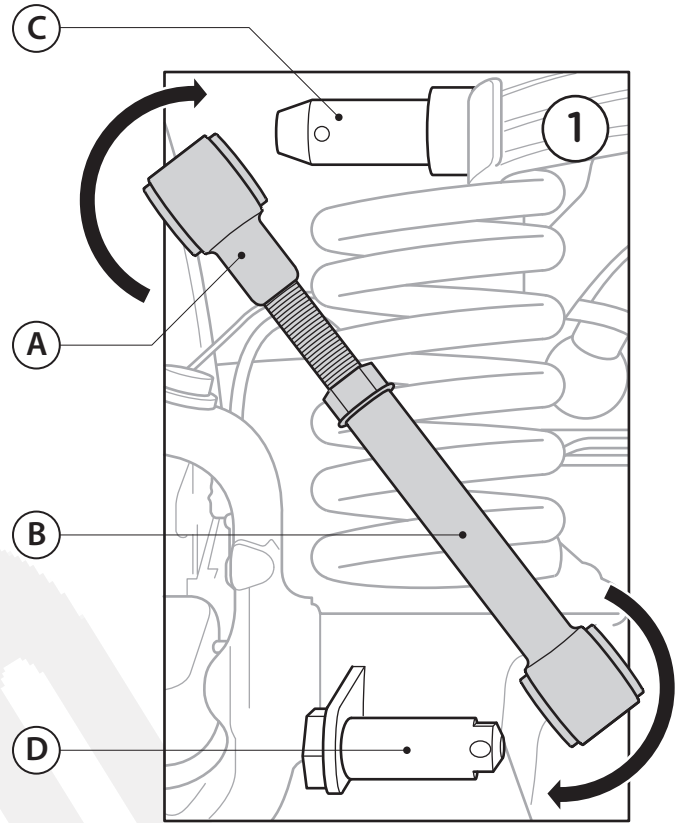
1. Angle Upper Ends (A) and Lower Ends (B) of Quick Disconnects and slide onto the Tapered Mounting Posts (C, D).

2. Insert Click Pins (J) as illustrated to secure.

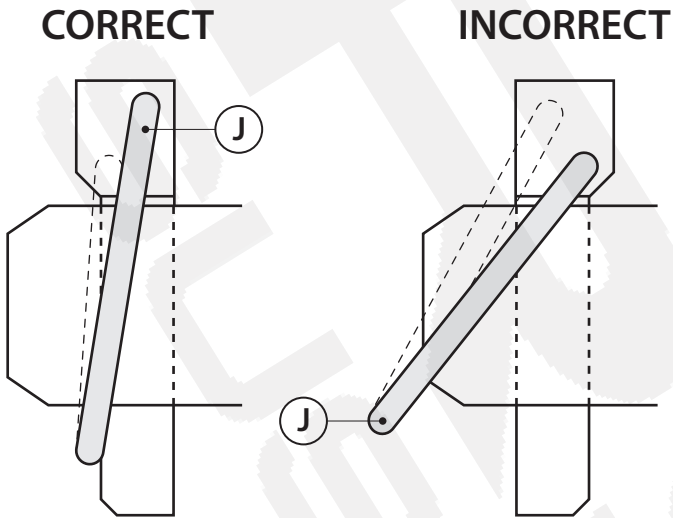
When properly installed, the ring on the Click Pin will “snap” against the shaft of pin. When installed back-wards, the ring does not fit snugly against shaft.

IMPORTANT

Bushing cradles at both ends of Quick Disconnect must remain parallel with each other when Jam Nut is tightened.



Click Pin Installation Reference



Remove & Store Quick Disconnects

1. Remove the Click Pins (J) from the Upper and Lower Mounting Posts.

Completely remove Quick Disconnects from vehicle and store safely inside vehicle. HINT: To avoid losing Click Pins, reinstall them on mounting posts while Quick Disconnects are removed.

Using plastic wire ties, bungee cord or equivalent, secure the swaybar to the chassis in the horizontal position.

IMPORTANT

When disconnected, the swaybar must be secured in the horizontal position to pre-vent interference with the tires. Failure to secure the swaybar correctly can lead to severe tire damage.

Important Product Safety Information

Indicates hazards or unsafe situations which could result in severe personal injury or death.

WARNING

Indicates hazards or unsafe situations which could result in severe personal injury or death.

CAUTION

Indicates hazards or unsafe situations which could result in property damage or minor to moderate personal injury.

NOTICE

Careful attention is required to this operation that generally does not relate to personal injury, although damage to your product or other property may result if you fail to follow instructions.

WARNING

Higher Rollover Risk

Modifying your Jeep® to improve off-road performance may result in vehicle handling different than as factory equipped, including increased ride-height and/or chassis articulation; reduced lateral stability and higher risk of roll-over or other accident. Also, owner's choice of larger tire and wheel combinations may require additional braking force or increased stopping distances.

To reduce risk of serious injury and accident:

- Choose modifications that balance your actual highway & off-road use.
- Avoid sharp turns, abrupt maneuvers or steep side-cambers.
- Avoid other maneuvering conditions which may cause the vehicle to trip, roll, lose traction or compromise your ability to safely brake in an emergency
- Routinely inspect your vehicle components for unusual wear or off-road damage. Repair or Replace any unserviceable components before use.
- Do not modify or combine body lifts with other mechanical lifts contrary to manufacturers' or Jeep® recommendations & warnings.
- Acquaint any other drivers with your vehicle modifications and handling.
- Always wear seat belts and/or appropriate off-road restraints and reduce your speed.

IMPORTANT

SOME VEHICLES MAY REQUIRE extended front brake hoses or other modifications to compensate for additional suspension travel.

NEVER DISCONNECT swaybar when operating vehicle on public roads.

WHEN DISCONNECTED, the Quick Disconnects must be completely removed from vehicle, and the swaybar must be secured to the chassis in the horizontal position to prevent interference with tires.

WARNING

Stay Connected On-Road

On-highway safety is enhanced by controlling body roll. Never disconnect swaybar when operating on public roads.

WARNING

On-highway safety is enhanced by controlling body roll. Never disconnect swaybar when operating on public roads. When disconnected off-road, swaybar must be secured to prevent interference with other suspension components.

Brakelines must be secured and retain some slack throughout range of suspension travel. Check after installation of Quick Disconnects & use longer DOT approved brakelines if necessary.